



# MONTHLY MEMBERSHIP PROGRESS REPORT

District 201W2

Results as of: 05/31/2019

GMT: ANN ELDRIDGE

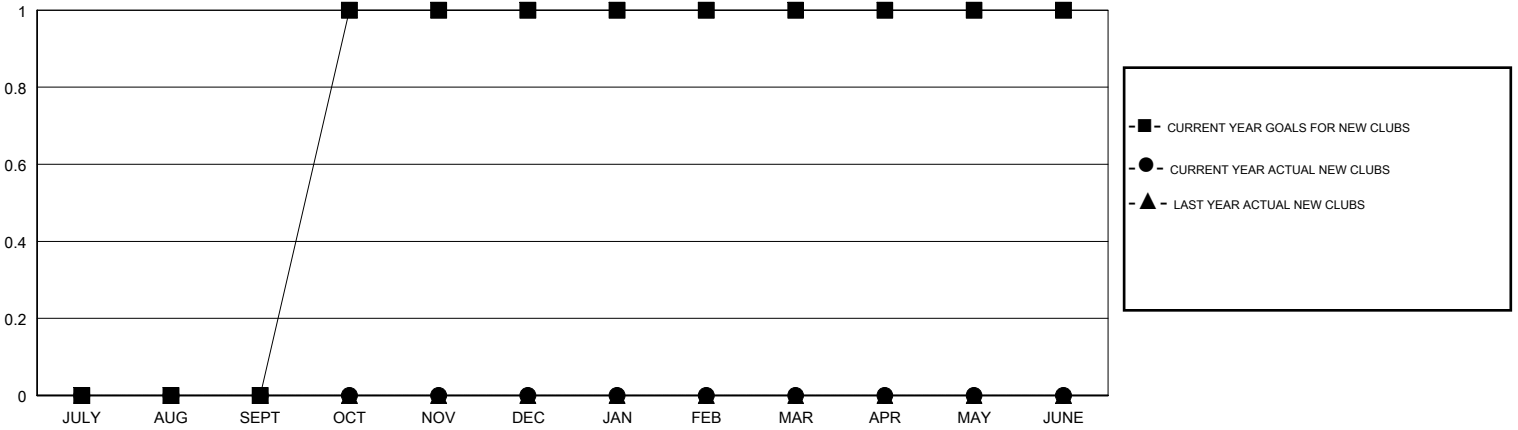
LOCATION AUSTRALIA

GMT CA

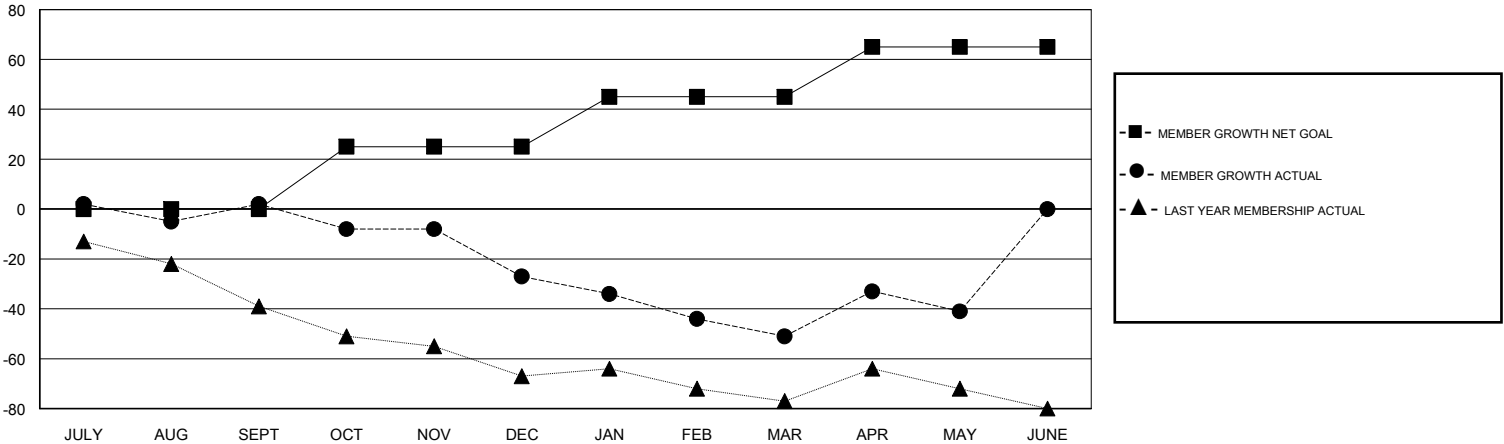
Clubs			
RESULTS FOR 2018-2019			
QUARTER	NEW CLUB GOAL	NEW CLUBS	DROPPED CLUBS
JULY/AUG/SEPT	0	0	0
OCT/NOV/DEC	1	0	0
JAN/FEB/MAR	0	0	0
APR/MAY/JUNE	0	0	0

Members			
RESULTS FOR 2018-2019			
QUARTER	MEMBER GROWTH NET GOAL	MEMBER GROWTH ACTUAL	DROPPED MEMBERS ACTUAL (including transfers)
JULY/AUG/SEPT	0	34	28
OCT/NOV/DEC	25	32	52
JAN/FEB/MAR	20	34	52
APR/MAY/JUNE	20	40	27

GOALS AND ACTUAL NEW CLUBS CUMULATIVE



GOALS AND ACTUAL MEMBERS CUMULATIVE



DROPPED CLUBS: 0
------------------

45 CLUBS OF 62 ADDED 1 OR MORE NEW MEMBERS

GENDER DISTRIBUTION	
MALE	917 (67.03%)
FEMALE	451 (32.97%)
Women Percentage Fiscal Year Goal: 38%	

DROPPED MEMBERS	
DECEASED	10
CLUB CANCELLED	0
OTHER	149
<b>TOTAL</b>	<b>159</b>

[CLICK HERE FOR CUMULATIVE MEMBERSHIP DATA](#)

TOTAL FAMILY UNIT MEMBERS	241
FAMILY MEMBERS PAYING HALF DUES	121